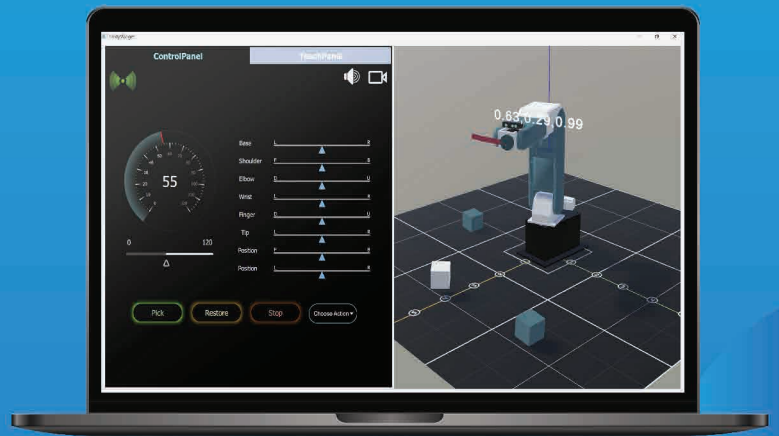


# HUMAN MACHINE INTERFACE (HMI)

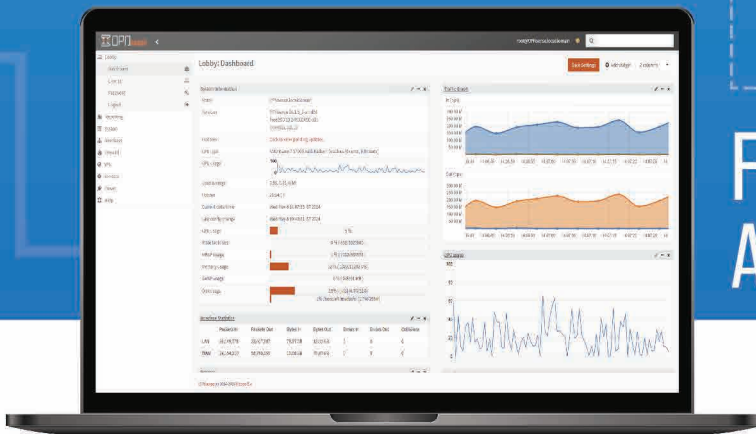
HMI dashboard, crafted using Qt C and QML, empowers users to manipulate the movements of a six-axis arm effortlessly. With real-time feedback displayed on the dashboard, users can visualize and fine-tune the arm's actions, enhancing precision and control.



## Key Features

- Simulation
- Synchronization
- Data Transmission
- Automation
- Optimized Performance

# FIREWALL CONFIGURATION AND MANAGEMENT SYSTEM



## Key Features

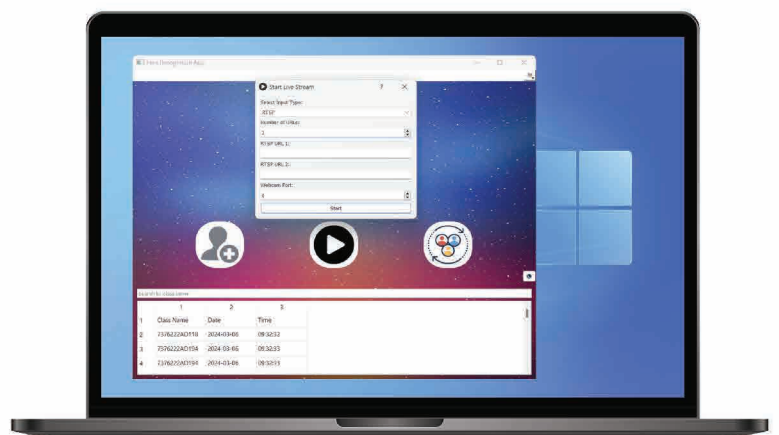
- Advanced Threat Protection
- Enhanced Security Measures
- Streamlined Administration
- Proactive Threat Mitigation
- Optimized Network Performance



Firewall Configuration and Management Systems include OPNsense firewall that provides robust network security features and intuitive management interfaces, offering advanced protection for networks of all sizes. With its modular design and regular updates, it ensures reliable defense against cyber threats, attacks while promoting flexibility and ease of use

# CROWD MANAGEMENT AND SECURITY

The software provides an end to end solution for the monitoring of Human Resources in the working environment through Artificial Intelligence



- ## Key Features
- Security alerts and custom modal for attendance monitoring